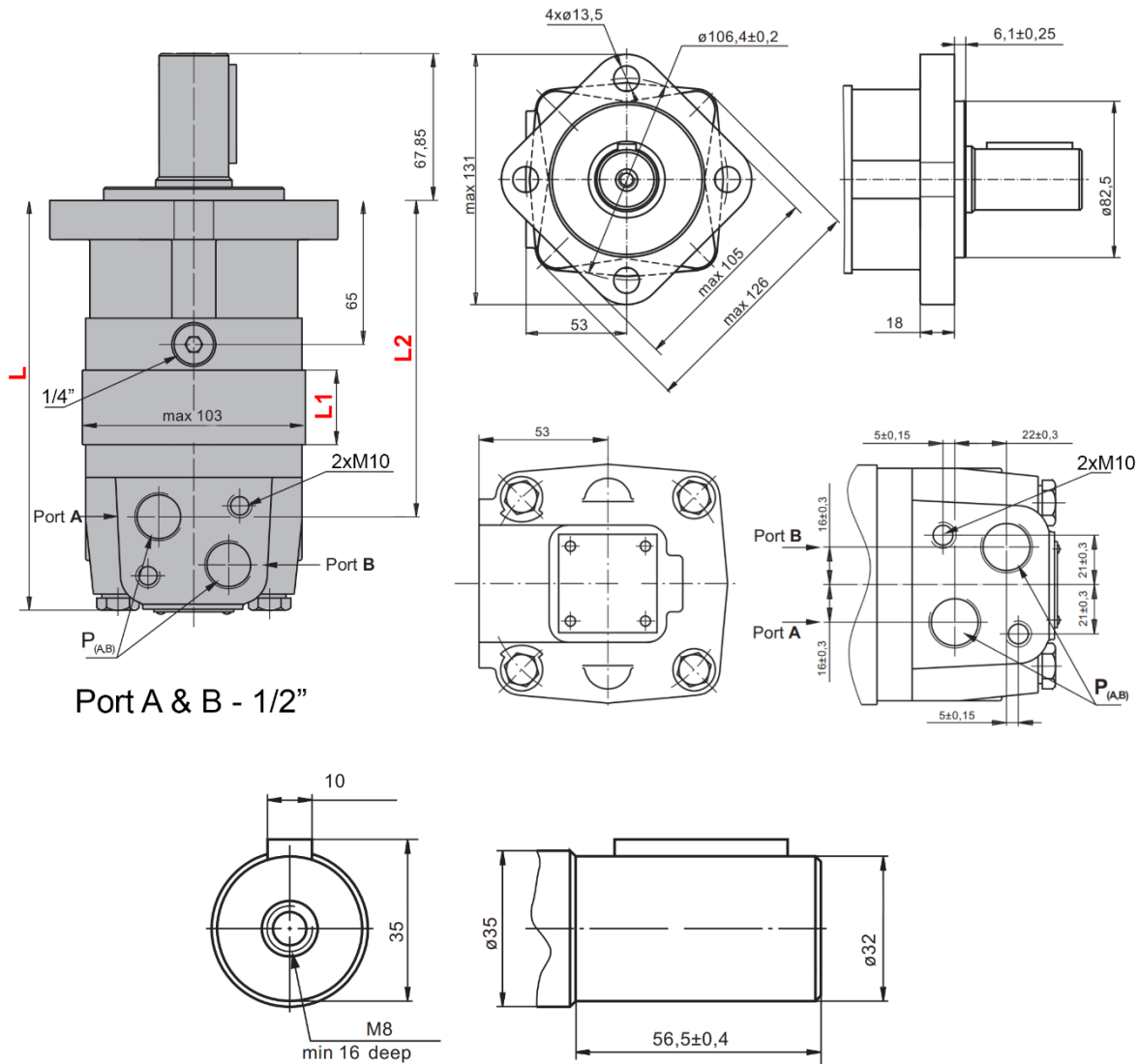


TECHNICAL DATA SHEET – DIMENSIONS

HYDRAULIC MOTORS MS



Port A & B - 1/2"

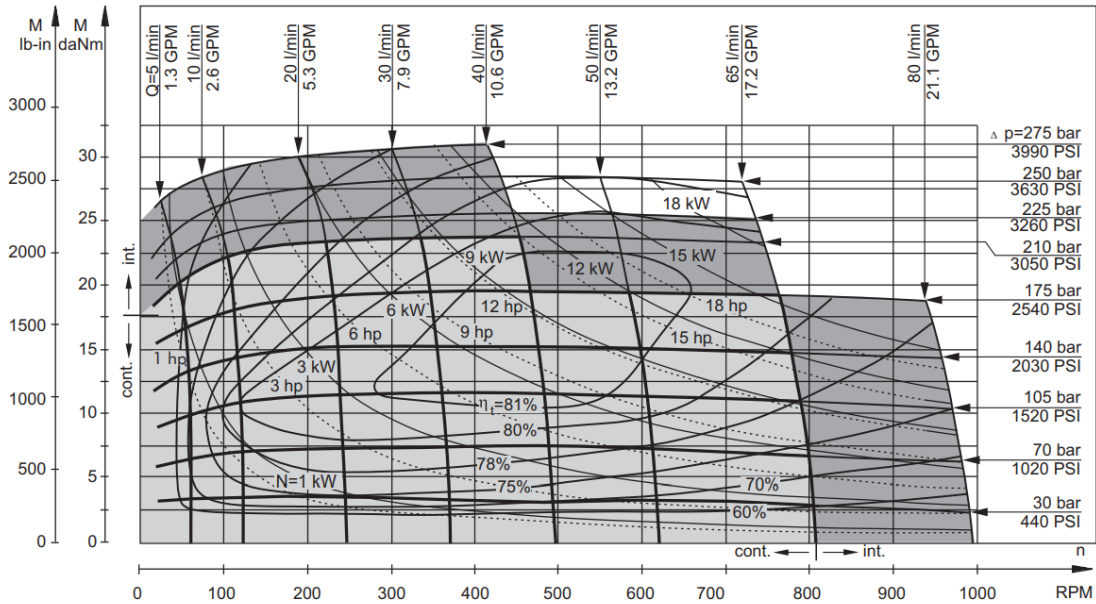
	L	L1	L2
	(mm)		
MS 80	168	14	124
MS 100	171	17,4	128
MS 125	176	21,8	132
MS 160	182	27,8	138
MS 200	189	34,8	145
MS 250	197	43,5	154
MS 315	209	54,8	165
MS 400	223	69,4	179

		MS 80	MS 100	MS 125	MS 160	MS 200	MS 250	MS 315	MS 400	
cm/revolutions		80,5	100	125,7	159,7	200	250	314,9	397	
Revolutions [rpm]	Constant	810	750	600	470	375	300	240	190	
	Intermittent	1000	900	720	560	400	360	290	230	
Navor [daNm]	Constant	24	30,5	37,5	49	61	72	82,5	86,5	
	Intermittent	31	39	49	60	72	87	100	99	
Power [kW]	Constant	15,5	18		16,5		14,5	15,7	11	
	Intermittent	19,5	22,8	22,5	23	22	18	17	12,5	
Pressure [bar]	Constant	210					200		160	
	Intermittent	275					250	240	190	
	Max.	295					270	260	210	
Oil flow rate [L/min]	Constant	65	75							
	Intermittent	80	90							
Connection thread		1/2"								
Weight [kg]		9,9	10,1	10,4	10,7	11,1	11,7	12,4	13,1	

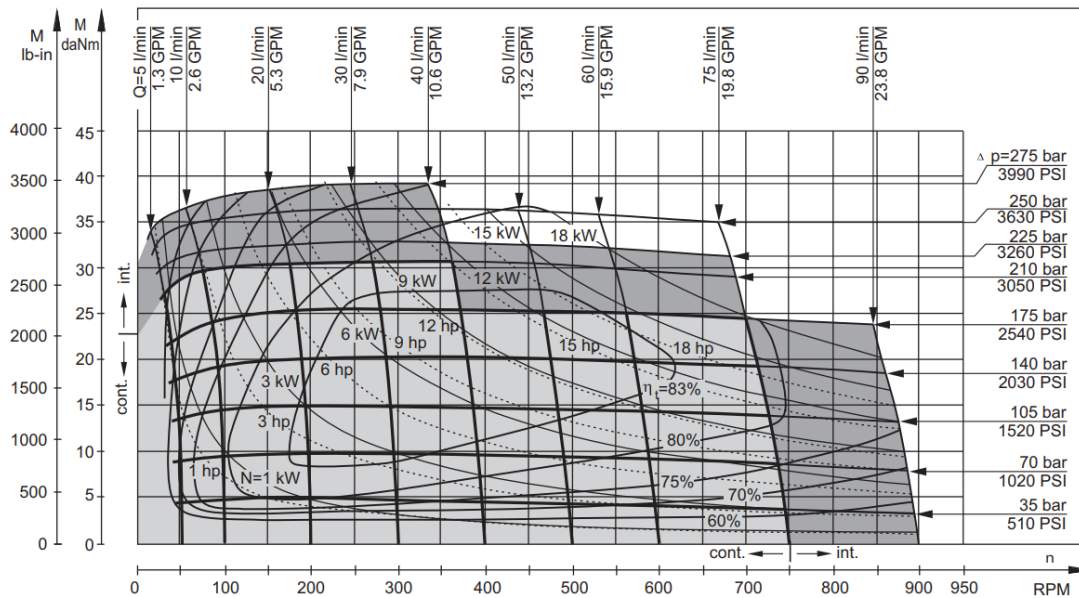


DIAGRAMS

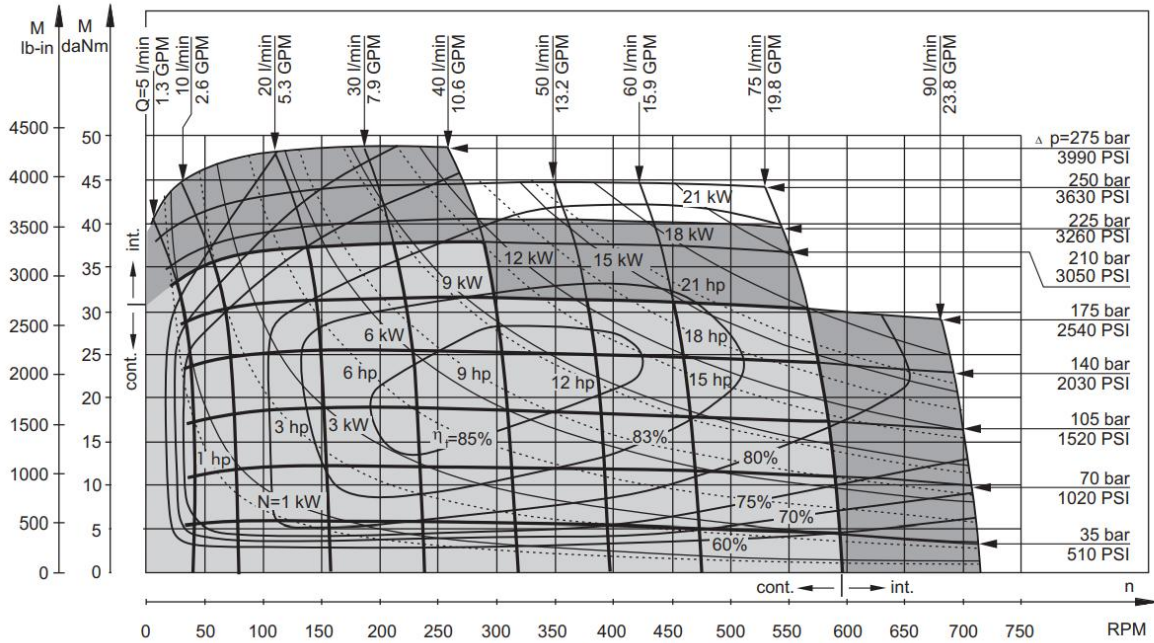
MS 80



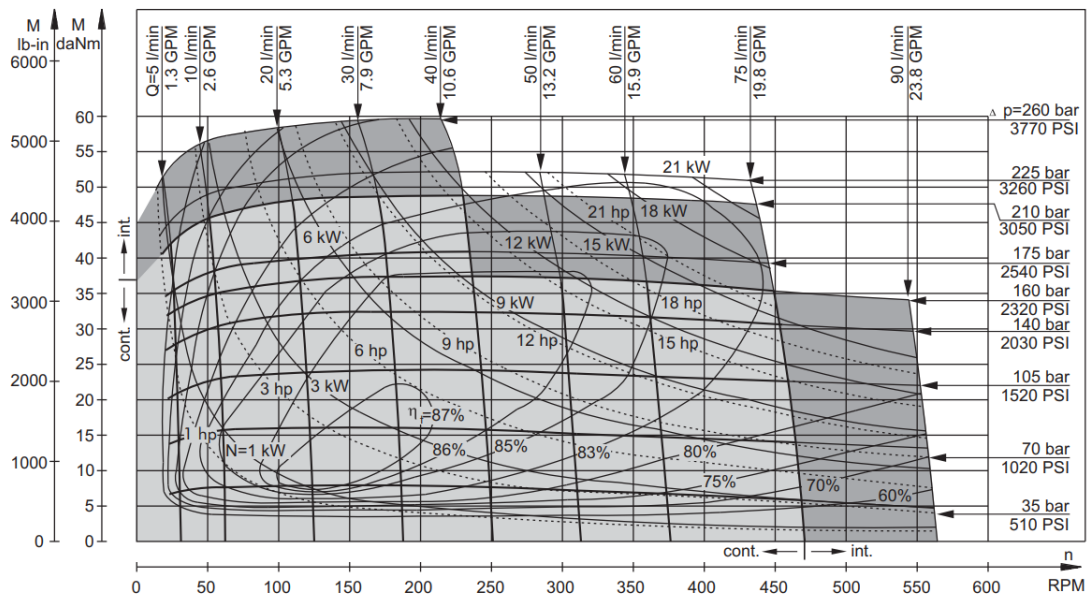
MS 100



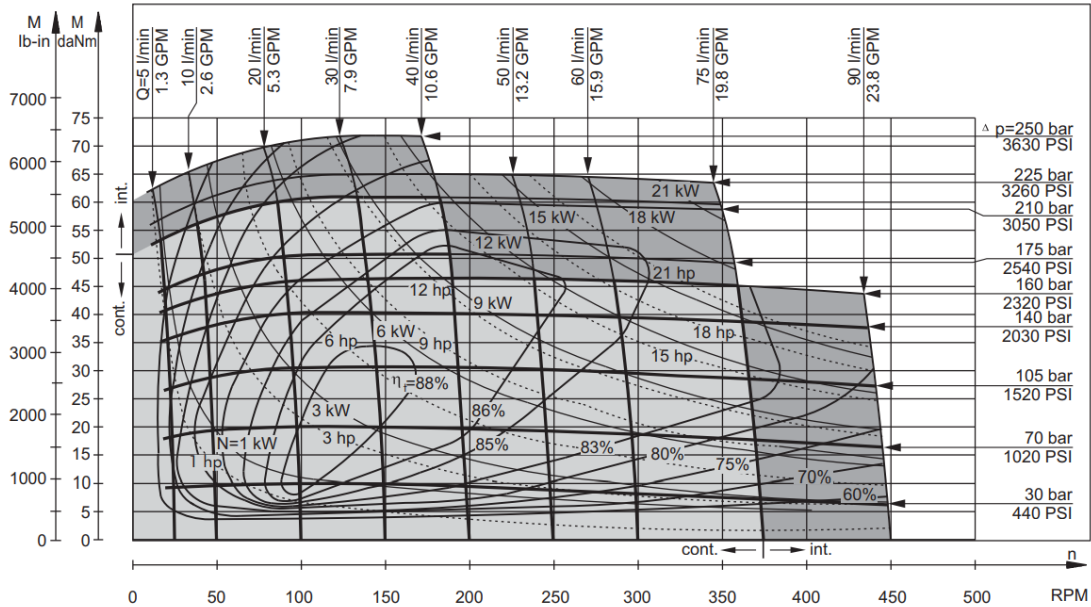
MS 125



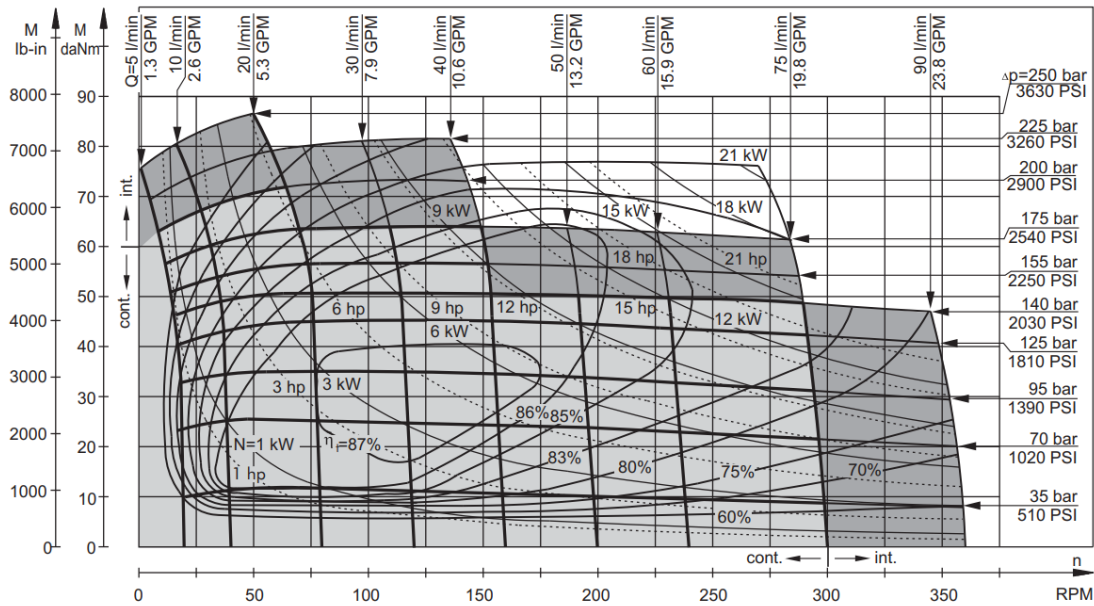
MS 160



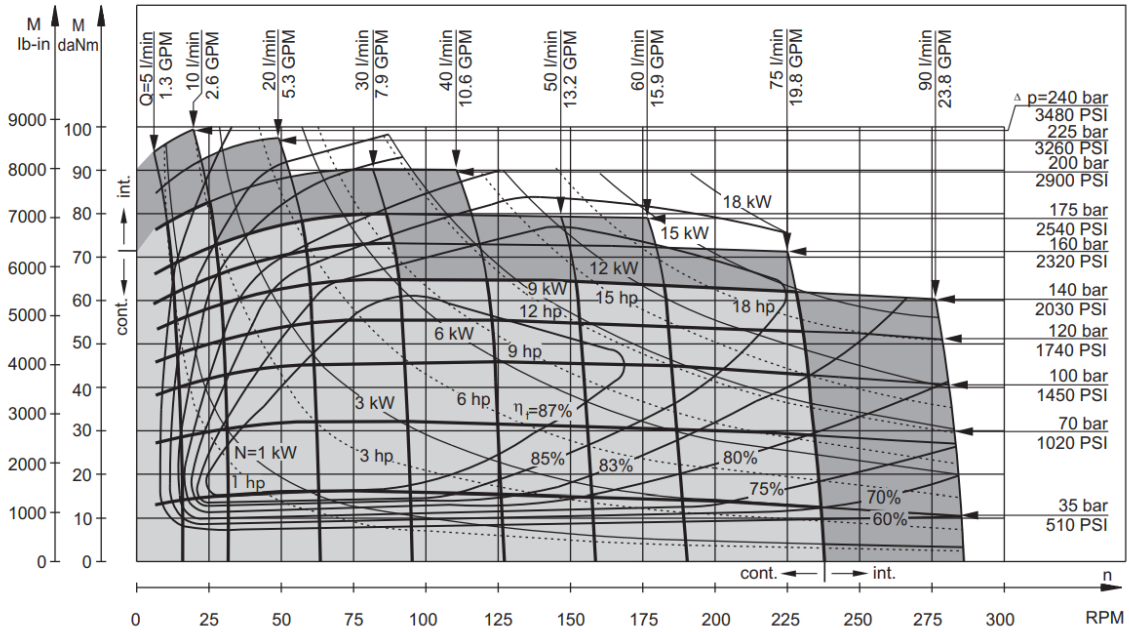
MS 200



MS 250



MS 315



MS 400

